

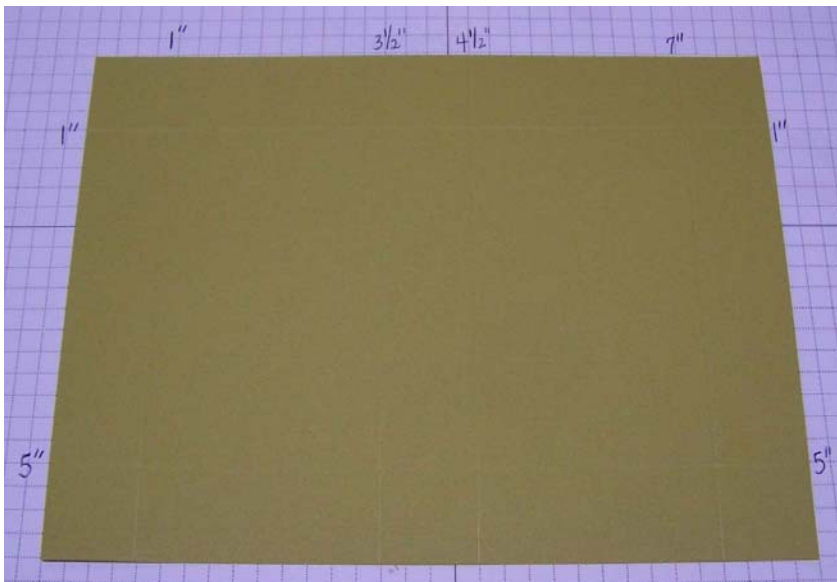
Mini Pizza Box Tutorial

Supplies:

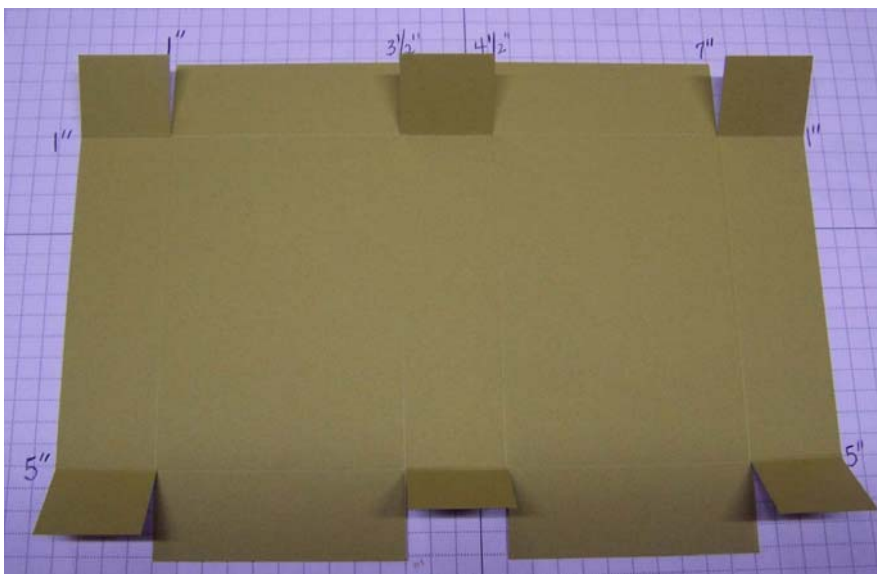
- (1) - 6" x 8" piece of Kiwi Kiss Cardstock
- (1) - 1" x 12" piece of Holiday Treasures DSP (Red Check)
- (1) - 2-1/4" x 3-3/4" piece of Holiday Treasures DSP (Polka Dot)
- (1) - 3 x 3 Whisper White Cardstock
- Holiday Collection Stamp Set
- Kiwi Kiss Classic Ink Pad
- Scallop Punch
- Baja Breeze Striped Ribbon
- Sticky Strip
- Dimensionals
- Paper Trimmer & Scoring Blade
- Paper Snips
- Candy (Reese's fits perfectly!)

Tutorial:

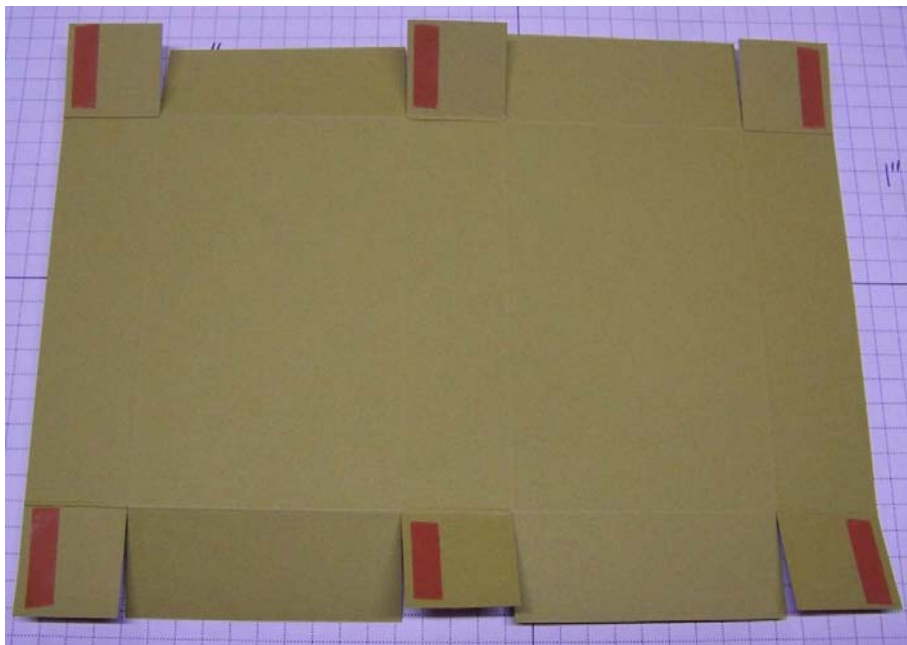
1. With the 6" (short side) at the top - score your cardstock at 1" and 5".
2. Rotate cardstock and then with the 8" (long side) at the top - score your cardstock at 1", 3-1/2", 4-1/2", and 7".



3. Make slits with your paper snips from the edge of the cardstock only up to the first score line on the two 8" (long side) sides of your cardstock.



4. Add sticky strip where indicated on next photo. Use bone folder to fold on all score lines.



5. Fold side tabs and adhere to create the pizza box. Notice how it opens - that is why it is called a pizza box! Insert your candy. I love Reese's and they fit perfectly!



6. Close box and adhere Polka Dot DSP to top of box.



7. Wrap and adhere red checkered DSP around box for a removable belly band.



8. Wrap Baja Breeze striped ribbon around belly band. I did not adhere the ribbon to the belly band but you can if you'd like.

9. Stamp the word enjoy for the holiday collection stamp set in Kiwi Kiss ink onto Whisper White cardstock. Punch out with the scallop circle punch. Add two dimensionals on the back of the scallop and adhere to the top of the ribbon.



These make great stocking stuffers and can be converted for any holiday and/or occasion. I can't wait to try Valentine's Day!

Enjoy!

Photos and tutorial created by Rochelle Edwards, Independent Demonstrator.